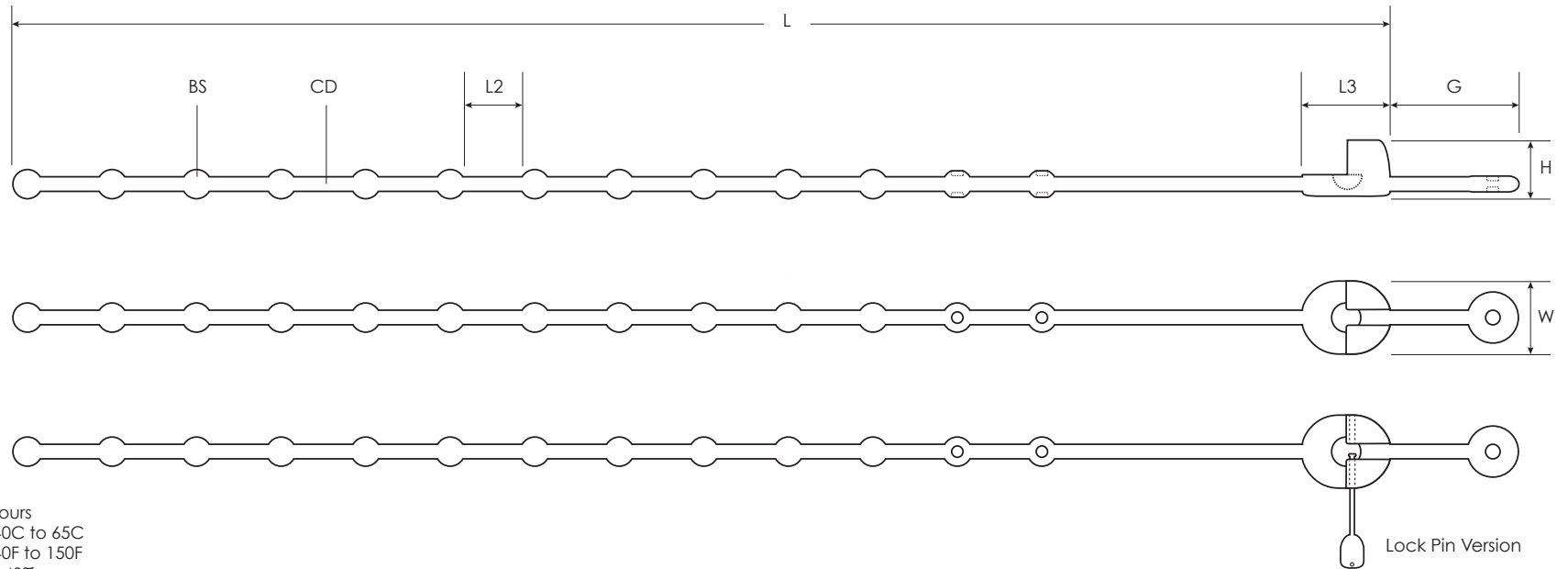


PART NUMBER	COLOR	BS (BALL STOP)	CD (CORD DIAMETER)	L	L2	L3	W	H	G	MAXIMUM BUNDLE DIAMETER	TENSILE STRENGTH	LOCK PIN
SWKB8	BLACK	1/4"	1/8"	8"	1/2"	5/8"	1/2"	1/2"	1 1/2"	3"	10lbs	N
SWKB14	BLACK	1/2"	1/4"	14"	1"	1 1/4"	1"	7/8"	1 7/8"	5"	50lbs	N
SWKB14LP	BLACK	1/2"	1/4"	14"	1"	1 1/4"	1"	7/8"	1 7/8"	5"	50lbs	Y
SWKB24	BLACK	3/8"	5/16"	24"	1"	1 1/2"	1 1/4"	1"	2 1/4"	8"	75lbs	N
SWKB24LP	BLACK	3/8"	5/16"	24"	1"	1 1/2"	1 1/4"	1"	2 1/4"	8"	75lbs	Y

(ALL MEASUREMENTS APPROXIMATE / FOR REFERENCE ONLY)



MATERIAL SPECS:

EPDM
 UV=100 pphm, 72 hours
 Operating Temp: -40C to 65C
 -40F to 150F
 Maximum Elasticity: 40%


NOTES:

Visit www.SpeedtechInternational.com/kwikbandit to confirm drawing is up to date.

This is a reference drawing only.

Customers must test the product in their application.

Ball must be properly seated in receptor prior to use.

Title: SPEEDWRAP®Kwik Bandit™				DWG in IN (MM)		FINAL	
Tolerances Unless noted: .XX = +/- .250 .XXX = +/- .100 Frac = +/- 1/4 Ang = +/-		File # F717A REVA		DWN: DT:		APP: DT:	
		Mat'l: RE:		 Speedtech International, Inc PO Box 246 Racine, WI 53401 USA Phone: 800-771-3896 Fax: 262-635-9395 sales@SpeedtechInternational.com www.SpeedtechInternational.com		Part #	
						SWKB STYLE	
REV A Changed part#SWKB08 to SWKB8. Updated STYLE name.		**FOR REFERENCE ONLY** UPDATED 17DEC2014				Print Type	